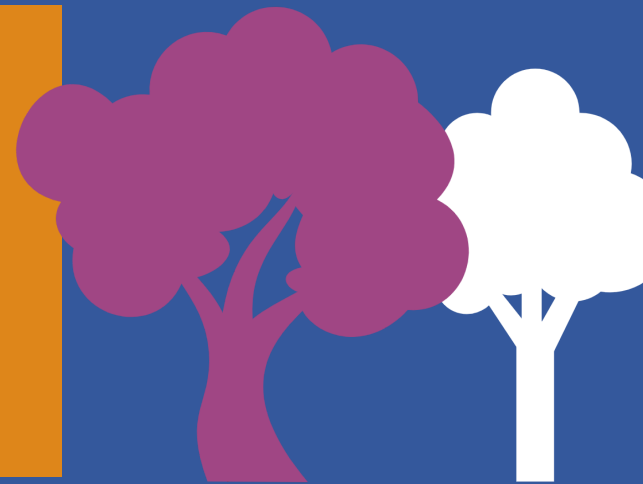


# Grasslands

## WHAT IS A GRASSLAND ECOSYSTEM?

Grassland ecosystems are open areas of habitat that are mainly composed of grasses and grasslike plant species. In addition to the name "grassland", this type of terrain can also be called a savannah, prairie, or a rangeland. Summers are hot, and winters are cold.

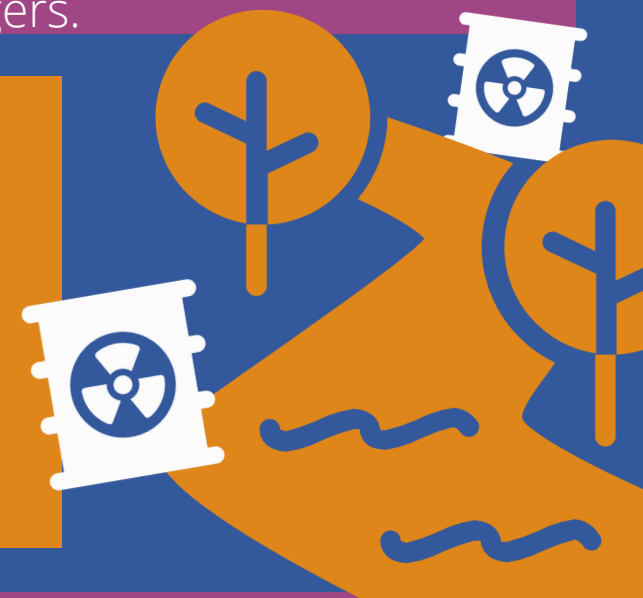


## WHO LIVES IN A GRASSLAND ECOSYSTEM?

The majority of species who live in this ecosystem are grazing animals. These include buffalo, rhino, elephants, zebra, antelope, badgers, armadillos, and also many different kinds of insects and birds. Additionally, there are predators, including wolves, coyotes, swift foxes, leopards, hyenas, and badgers.

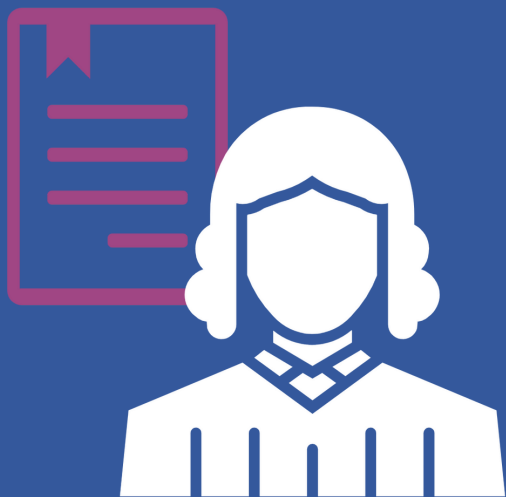
## ISSUES IN A GRASSLAND ECOSYSTEM

Most issues relating to grasslands revolve around habitat loss, with agriculture being the biggest cause. Expansion of urban areas is also a contributor to habitat loss. Climate change is another issue because it causes droughts, abnormal precipitation patterns, and increased temperatures.



## POLICIES IN A GRASSLAND ECOSYSTEM

The Temperate Grasslands Specialist Group, with the support of the IUCN and the WCPA, has implemented the Temperate Grasslands Conservation Initiative (TGCI). The goal of the TGCI is to preserve the grasslands on a global scale. The Grassland Ecosystem Management Plan is a smaller scale policy that seeks to conserve species.



## WHAT YOU CAN DO!

Educate yourself about issues within the grasslands. You can advocate for the preservation and protection of grasslands through donations of time and money to organizations that are working to save grasslands.

